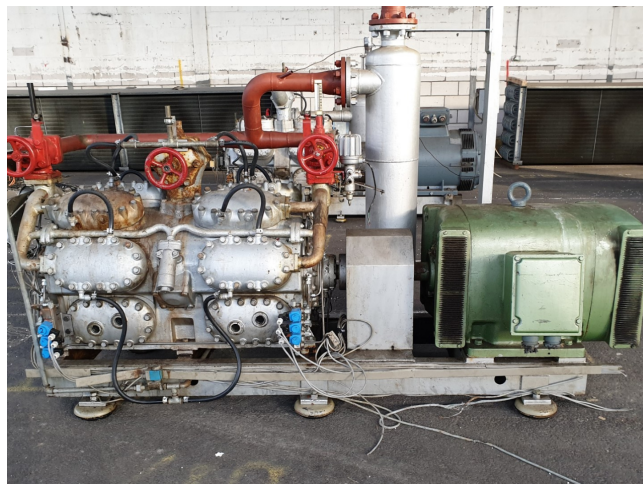


# Sabroe SMC 16-100-5 MK1

## Specifications

Brand	Sabroe
Type	SMC 16-100-5 MK1
Refrigerant	NH 3 (ammonia)
kW at +10°C/+40°C	1140
kW at 0°C/+40°C	744,5
kW at -5°C/+40°C	587,4
kW at -10°C/+40°C	454,2
Electromotor Specs	Schorch 50Hz / 110 kW / 985 RPM
Capacity Control	✓
On steel base frame	✓
Pressure safety switches	✓
Hp/Lp/Op	
Pressure gauges	✓
Hp/Lp/Op	
Oil separator	✓
m3 / h	875
Remarks	Capacity is calculated with SMC 116 S
Sizes	2850x1000x1900 mm
Stock	1



## Description

### Used Sabroe SMC 16-100-5 MK1

Used Sabroe SMC 16-100-5 compressor direct driven. Complete with electromotor Schorch 50 Hz - 110 kW - 985 RPM. Oil separator 58 ltr. Pressure safety switches and gauges.

\*Why choose for HOSBV? Were not only the largest used refrigeration specialist in Europe, but also, we deliver all equipment including an extensive test, warranty and industrial cleaning.

\*Optional we can also arrange the logistics.

